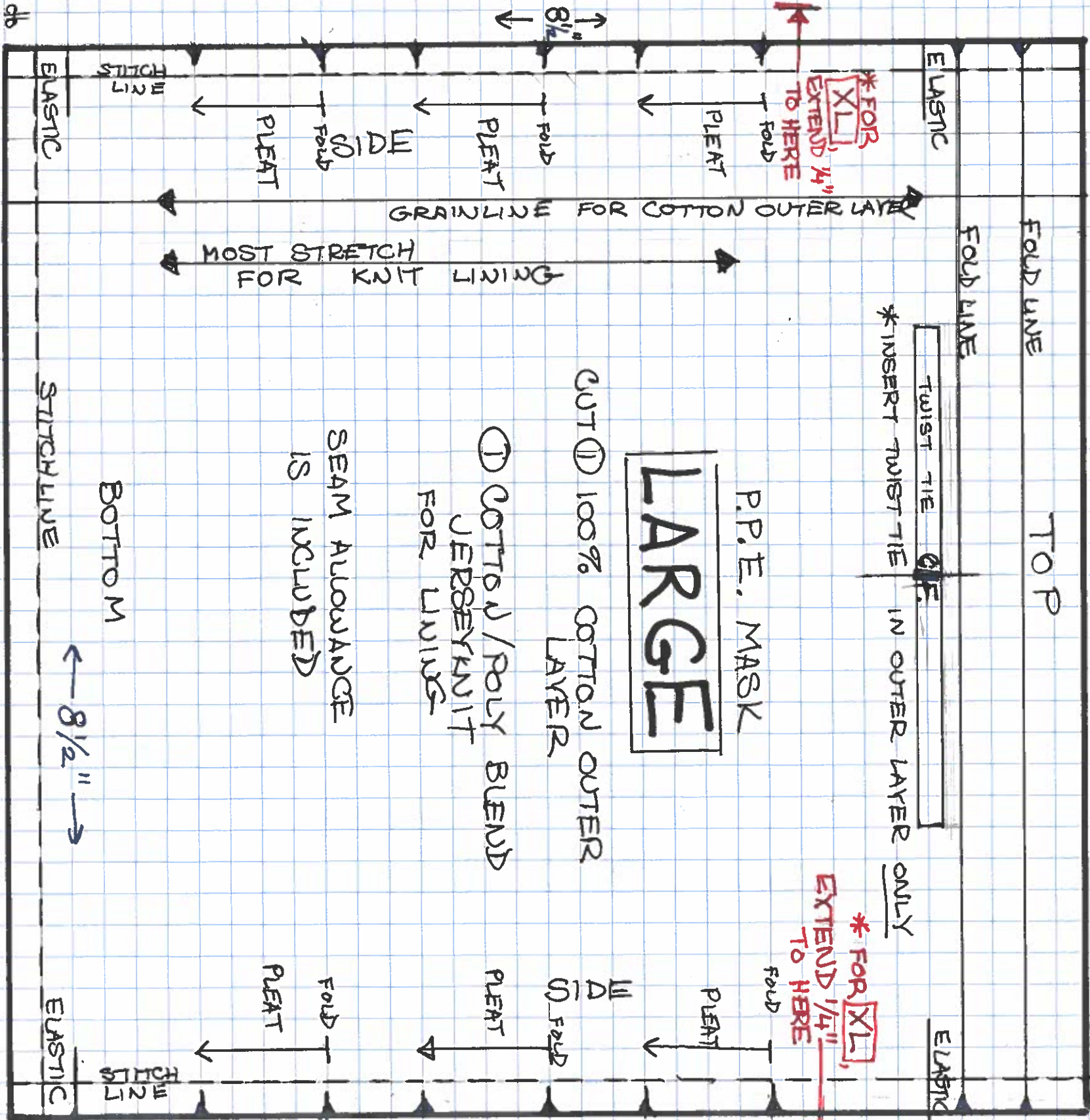


CUT ② 1/4" WIDE ELASTIC 6 1/2" LONG



FOLD LINE

TOP

FOLD LINE

ELASTIC

TWIST TIE

*INSERT TWIST TIE IN OUTER LAYER ONLY

ELASTIC

P.P.E. MASK

LARGE

CUT ① 100% COTTON OUTER LAYER

① COTTON/POLY BLEND JERSEYKNIT FOR LINING

SEAM ALLOWANCE IS INCLUDED

MOST STRETCH FOR KNIT LINING

GRAINLINE FOR COTTON OUTER LAYER

*FOR XL EXTEND 1/4" TO HERE

*FOR XL EXTEND 1/4" TO HERE

ELASTIC

STITCH LINE

BOTTOM

ELASTIC

3/8" STITCH LINE

3/8" STITCH LINE

← 8 1/2" →

← 8 1/2" →

8 1/2"

PLEAT

FOLD

SIDE

PLEAT

FOLD

PLEAT

FOLD

PLEAT

FOLD

PLEAT

3/8" FOLD

PLEAT

FOLD